

DELEGATED

AGENDA No.

**REPORT TO PLANNING
COMMITTEE**

DATE 23rd OCTOBER 2013

**REPORT OF HEAD OF
PLANNING**

PLANNING PERFORMANCE

Purpose of Report

The purpose of this report is to update members on the current performance of the planning department for the second quarter of 2013/2014.

Recommendation

That planning committee note this quarterly report.

Background

1. DCLG published a draft version of the Single Data List (SDL), which is intended to replace the previous performance management systems – National Indicators, etc. The SDL is a basic catalogue of all the data collections (existing and proposed) that central government departments require from local authorities. There are 152 separate data collection topics within this Single Data List, with 64 of these relating directly to Development and Neighbourhood Services. The large majority of these data collections are already undertaken within services, with only a small number of new data collections proposed.
2. Within the SDL, the data collections that will be required from Planning remain much the same as we report already, and revolve around the performance of managing planning applications, enforcement, green belt land data, previously developed land data and the Annual Monitoring Report for the LDF. There will be 5 data collections and then 41 data topics within the 5 broad collection areas.
3. It is therefore proposed to continue reporting performance to committee in 2013/14 along the lines that we have done already, as CLG have indicated that they wish this particular reporting criteria to remain. The performance level for this year therefore remains at 75% for majors, 80% for minors and 88% for other applications.
4. The reporting timeframe runs from 1st April-31st March each year. This report presents the performance of the second quarter in that period, 1st July to 30th September 2013.

Current performance position

5. Performance results achieved for the second quarter are 76.92% for major applications, 83.05% for minor and 97.30% for others, achieving above performance in all categories.

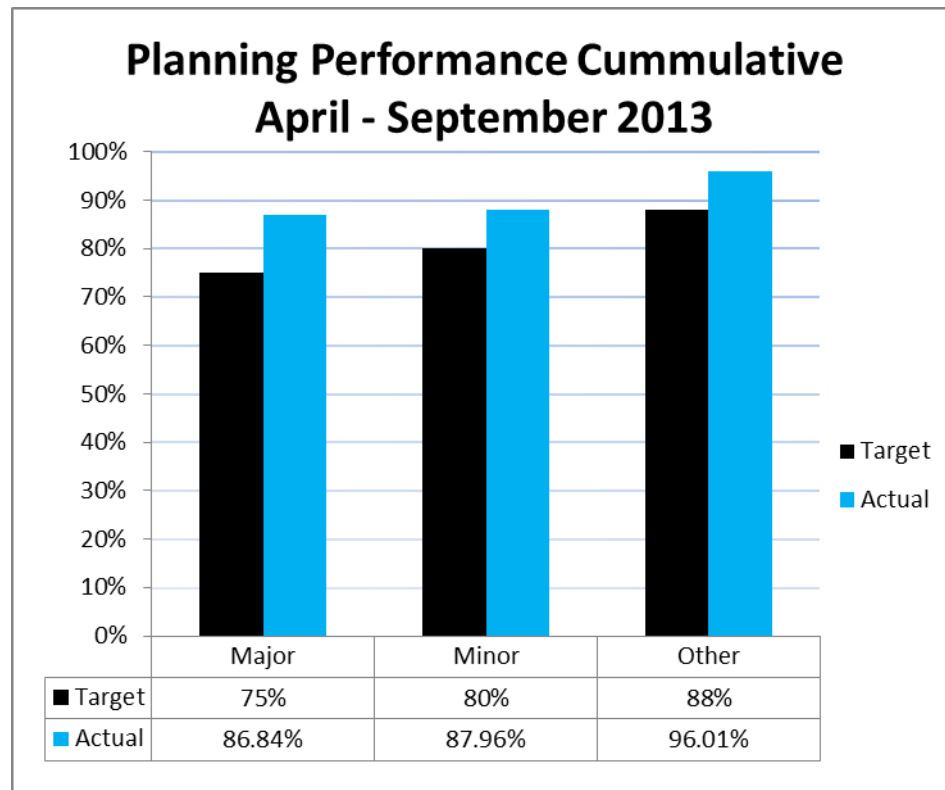
Table 1-Second quarter results

Q2 July/Sept 13				
Category	Determined	Within Target	Percent	Target
Major	13	10	76.92%	75%
Minor	59	49	83.05%	80%
Other	185	180	97.30%	88%

Table 2-Cumulative results April-Sept 2013

Cumulative April – Sept 13				
Category	Determined	Within Target	Percent	Target
Major	38	33	86.84%	75%
Minor	108	95	87.96%	80%
Other	376	361	96.01%	88%

Chart 1-Cumulative performance April –Sept 2013



6. There were 13 major applications determined within this quarter, 10 of which were determined in time. The three major applications which went over the target were land south of Green Lane, Yarm (12/1990/EIS), an outline application for residential development for up to 370 dwellings, additional railway station car parking, access, infrastructure, open space and landscaping (all matters reserved except for access); Mount Leven Farm, Leven Bank Road, Yarm (13/0776/EIS) which was a revised outline planning consent with all matters reserved except for means of access, for development of a retirement village including related leisure and social facilities and infrastructure; and Blenheim House Trenchard Avenue Thornaby (13/1057/FUL) for the demolition of Blenheim House and the erection of a two storey apartment building housing 15 apartment units with supporting ancillary accommodation and erection of 13 bungalows. The 15 apartment unit is dedicated to provide needs for learning disabilities with the 13 bungalows reserved for elderly and learning disability accommodation.

Recommendation

7. That planning committee note this performance report and acknowledge the hard work and dedication of Planning Staff and colleagues within other service areas to determine applications within the target periods and improve performance and the reputation of the Council.

Corporate Director, Development & Neighbourhood Services
Contact Officer: Carol Straughan
Tel: 01642 527027
carol.straughan@stockton.gov.uk

Financial Implications; decrease in income through the increase of PD and prior notifications has budgetary implications for service delivery; changes to the Planning system will place additional budgetary pressures on the service in the future; unknown variable if the authority fails to meet Planning Guarantee targets

Environmental Implications; None directly.

Community Safety Implications; None directly.